

# Eduroam access at Woking College

## Summary

This document describes methods of access to eduroam at Woking College.

Eduroam is a national Wi-Fi network set up at participating institutions to provide students and staff with free internet access. Simply login with your username and password.

## Eduroam settings at Woking College

Wi-Fi Network (SSID)	eduroam
Network Authentication	WPA2 Enterprise
Data Encryption	AES
Authentication Method	EAP-MSCHAPv2
Username	(your college email address e.g. aa12345@woking.ac.uk)
Password	(your college password)
Domain	None
Web Proxy	None
Certificate	Accept the certificate from wokingcollege.internal

## Method

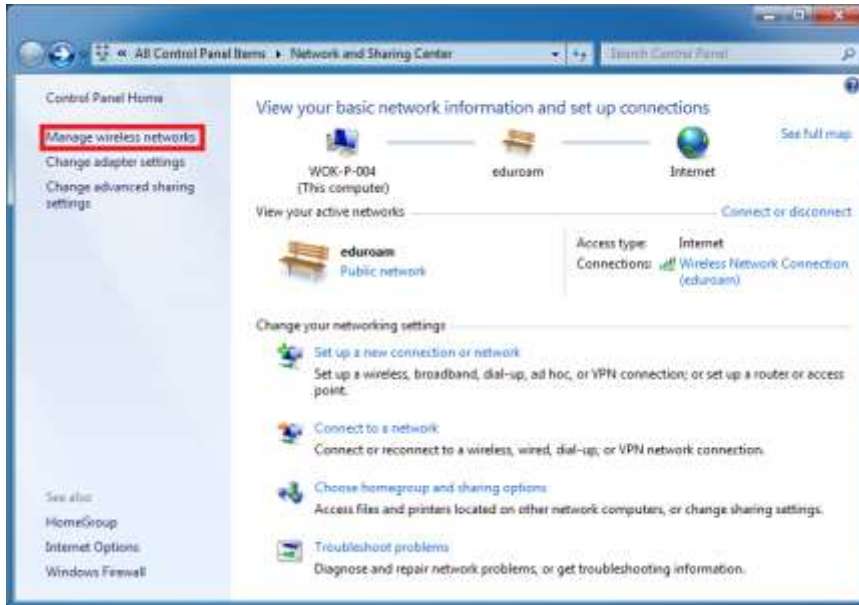
### Quick Setup

1. Connect to the eduroam SSID
2. Enter your college username and password **including** the “@woking.ac.uk”  
e.g. aa12345@woking.ac.uk
3. Accept the certificate from wokingcollege.internal

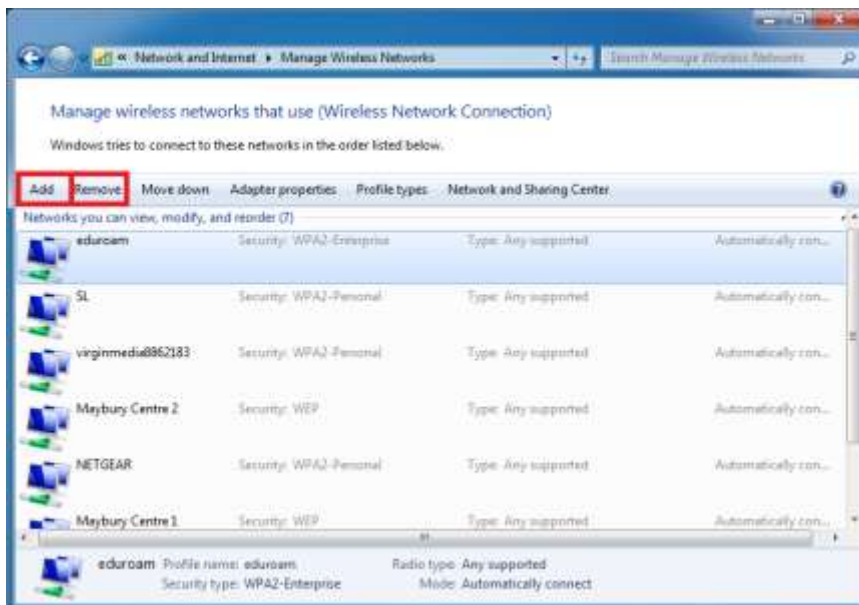
You should now be connected. If not, try following the steps in the sections below relating to your operating system. You may have to remove any existing versions of eduroam to connect properly.

### Windows 7

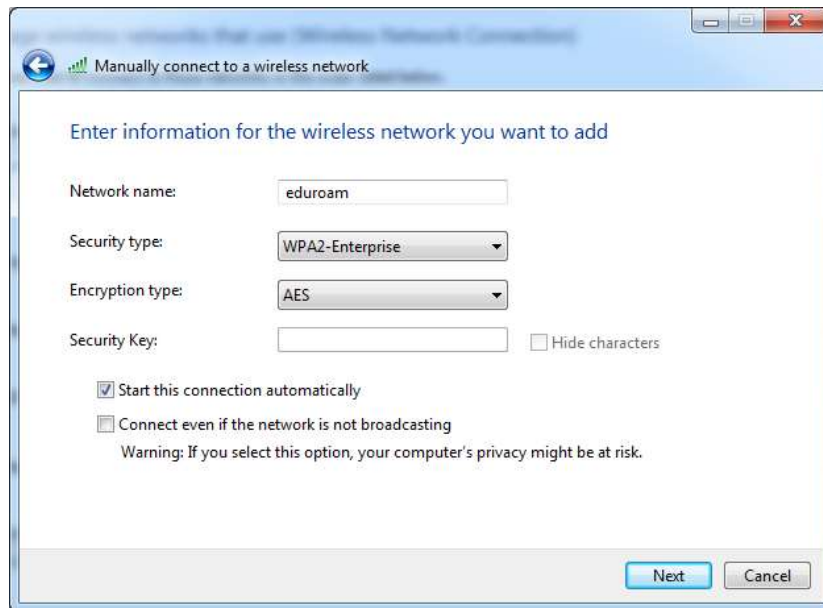
1. Open Network and Sharing Center and click on “Manage wireless networks” on the left hand side of the window



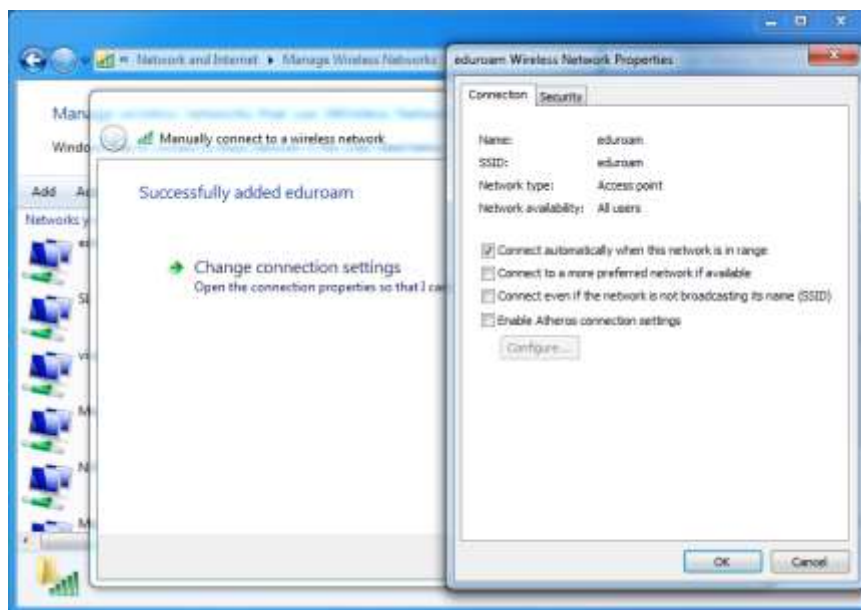
2. If eduroam already exists in the list of networks, remove it. If not, just click “Add”



3. Click “Manually create a network profile”
4. Enter the following information:



5. Click "Next" and click "Change connection settings" on the next page
6. A window will open up with some advanced settings for the wireless network

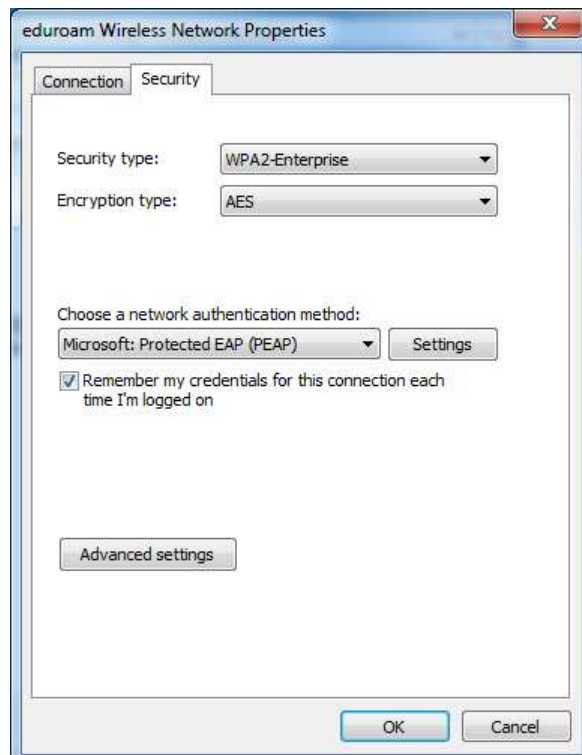


7. Click the security tab
8. Under "Choose a network authentication method", click "Settings"
9. Uncheck "Validate Server Certificate"
10. Click "Configure"
11. Uncheck "Automatically use my Windows logon name and password (and domain if any)"



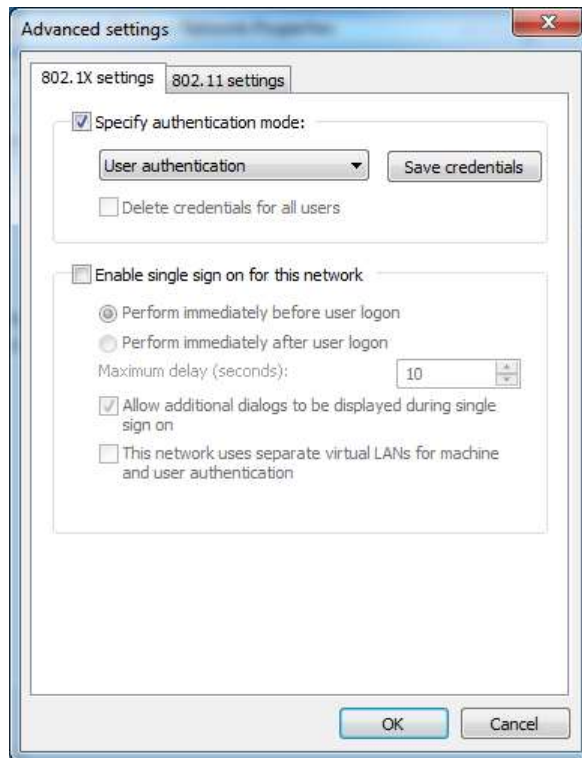
12. Click OK

13. On this window, click "Advanced Settings"



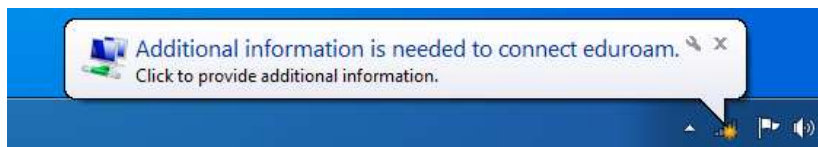
14. Check "Specify authentication mode"

15. Select "User authentication"



16. Click OK twice and exit the wizard

17. When the notification pops up asking you to enter additional information, click on it



18. Enter your college email address and password



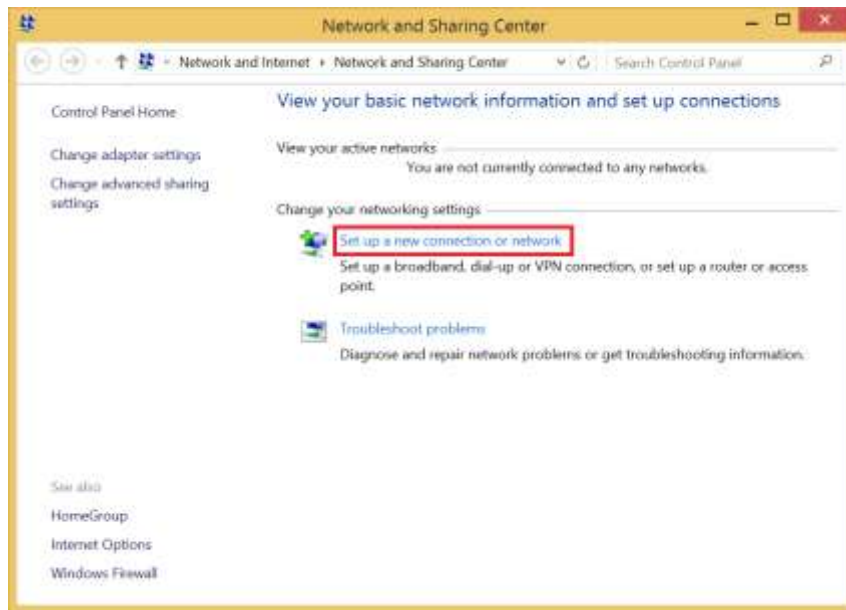
19. You should now be connected to eduroam

## Windows 8

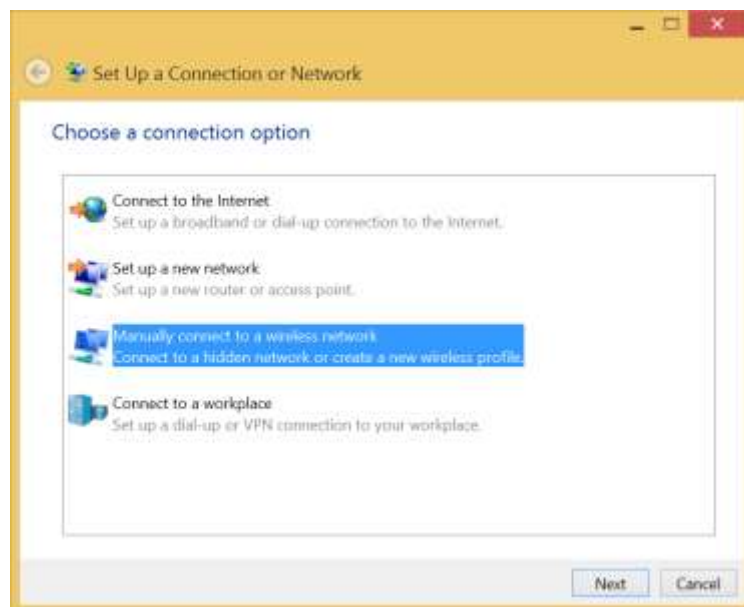
1. Right Click the network status in the system tray and select "Network and Sharing Center"



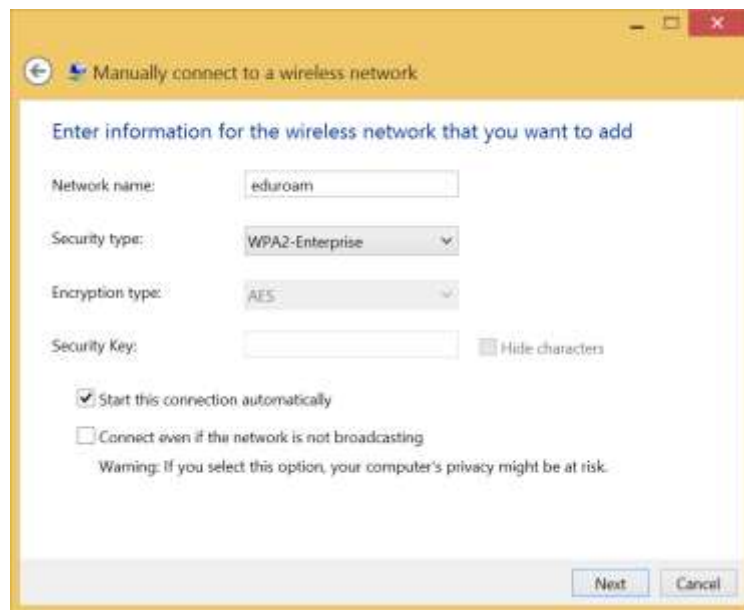
2. Select "Set up a new connection or network"



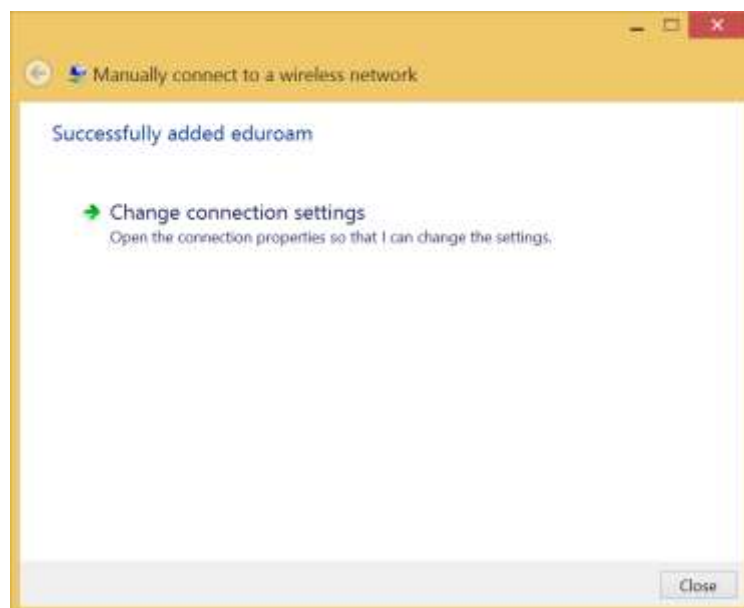
3. Select "Manually connect to a wireless network"



4. Enter the following information:

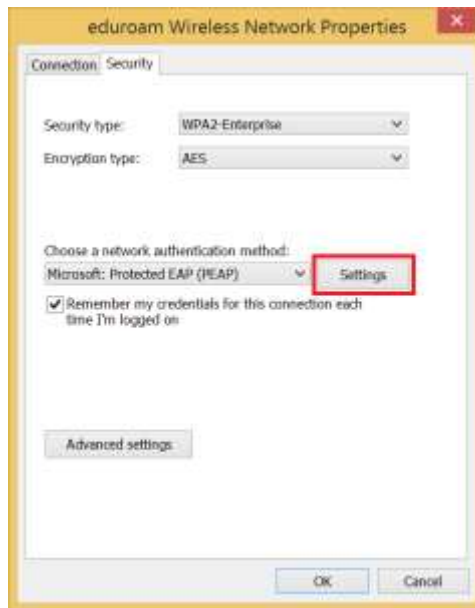


5. Click next and select "Change connection settings"



If a warning pops up saying that this network already exists, go to the command prompt and enter: `netsh wlan delete profile name="eduroam"`

6. Go to the security tab
7. Click "Settings" under "Choose a network authentication method"

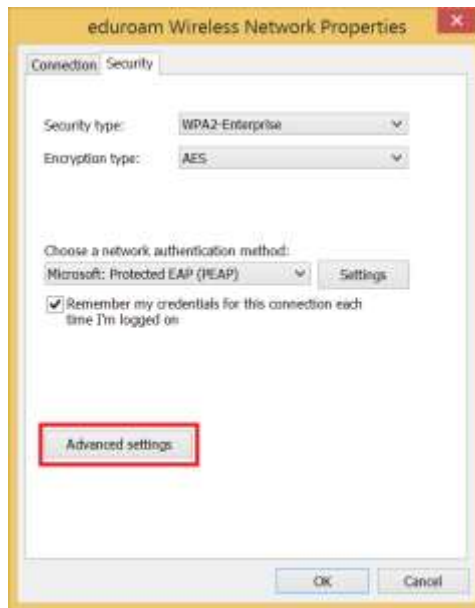


8. Untick "Verify the server's identity by validating the certificate"
9. Click "Configure" under "Select Authentication Method"
10. Untick "Automatically use my Windows log-on-name and password (and domain if any)"



11. Click "OK"
12. Select "Advanced Settings"





13. Tick "Specify authentication mode"

14. Change the combo box to "User authentication"



15. Click "Save credentials"

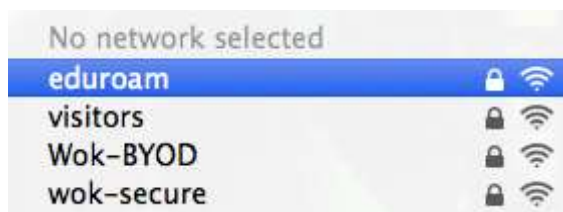
16. Enter your college email and password including "@woking.ac.uk"



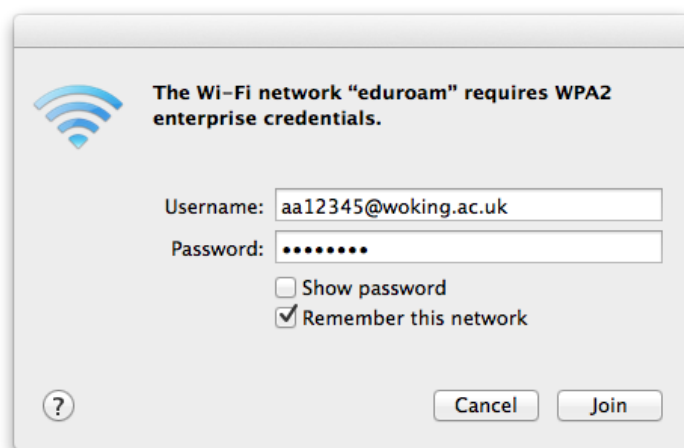
17. Click "OK" and exit all of the windows. You should now be connected to eduroam

## OS X

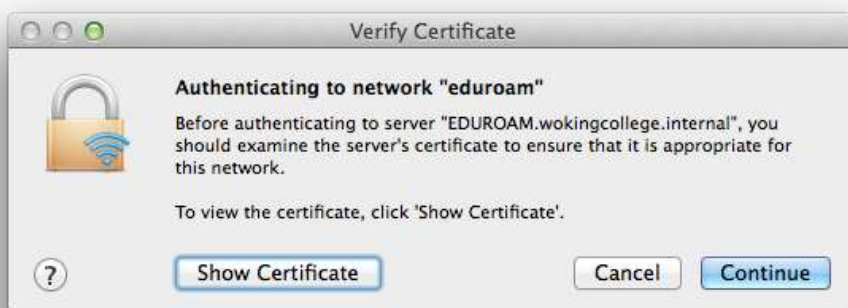
1. Click the wireless icon in the panel at the top of the screen and choose the eduroam SSID



2. Enter your college username **including** the "@woking.ac.uk" and your college password



3. Accept the certificate from wokingcollege.internal

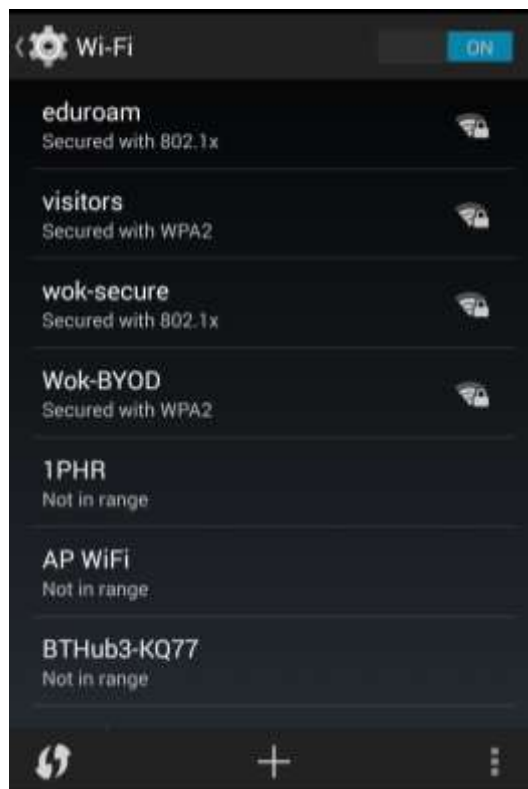


4. When you accept the certificate, you need to add it to your keychain. Enter your **local** username and password you use to login in to your system.

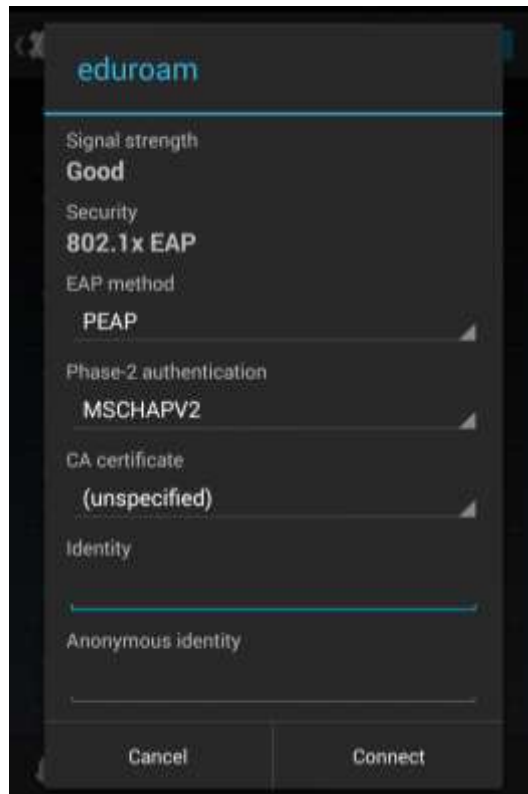


## Android

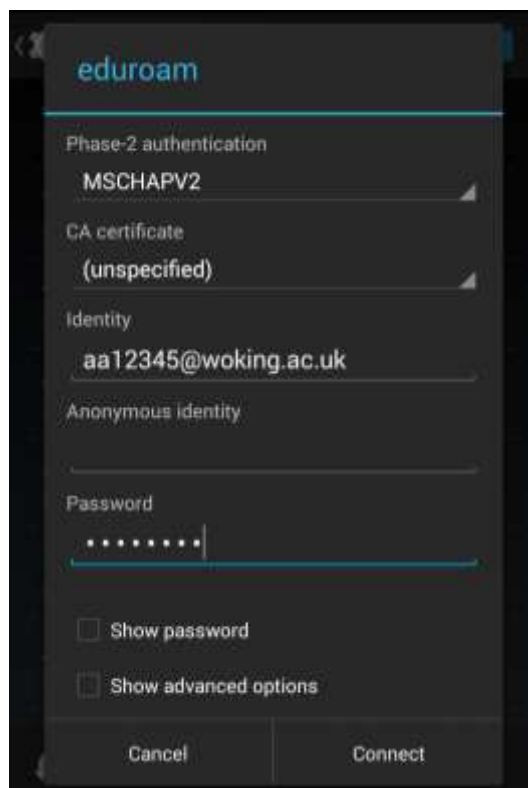
1. Open your Wi-Fi settings from the settings app. Your screen may differ



2. Press the eduroam network to connect
3. Change the Phase-2 authentication to "MSCHAPv2"



4. Scroll down and enter your college username **including** "@woking.ac.uk" and your password



5. Click "Connect"

iOS

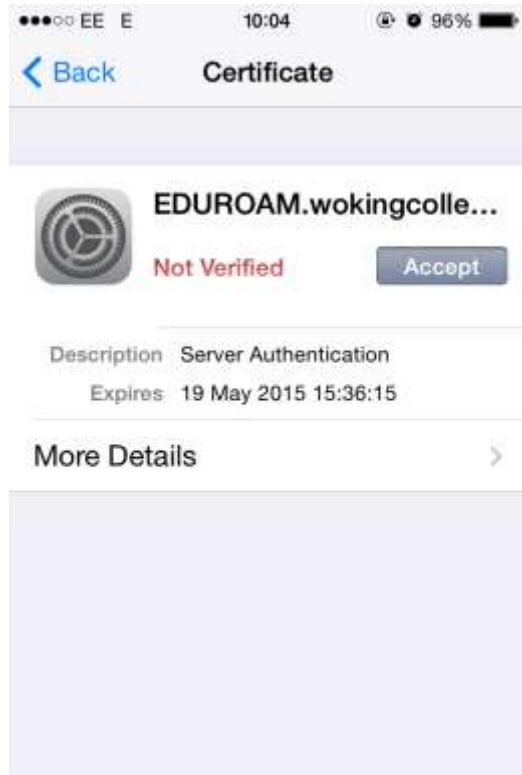
1. Open the settings app, switch on Wi-Fi and press the eduroam network



2. Enter your college username including "@woking.ac.uk" and your password



3. Accept the certificate from wokingcollege.internal



4. You should now be connected